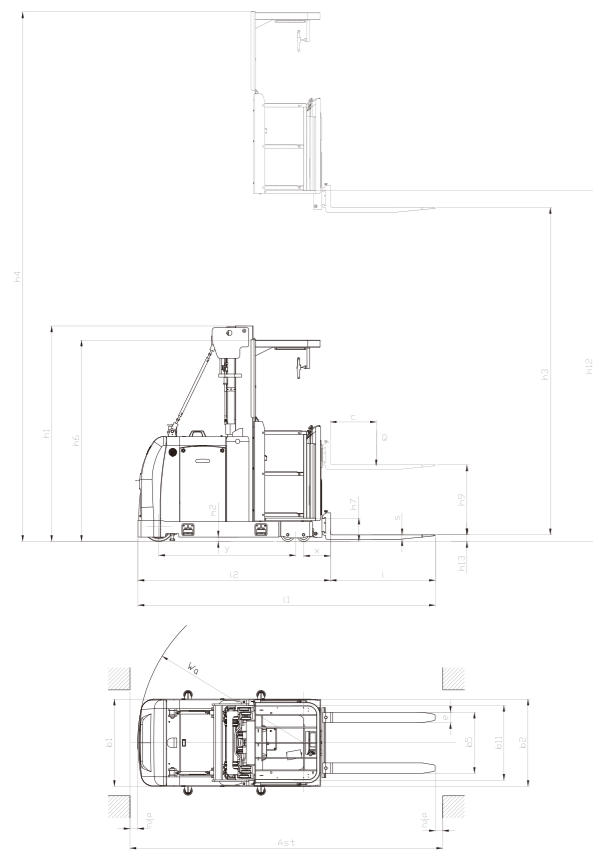
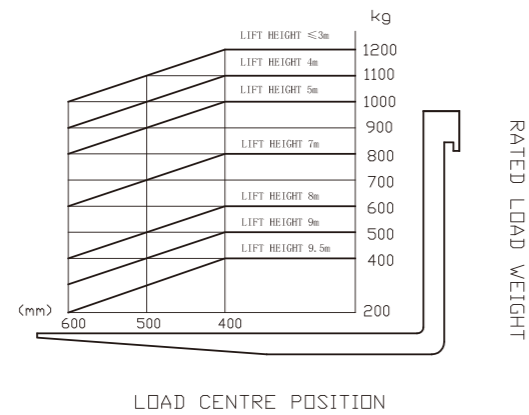


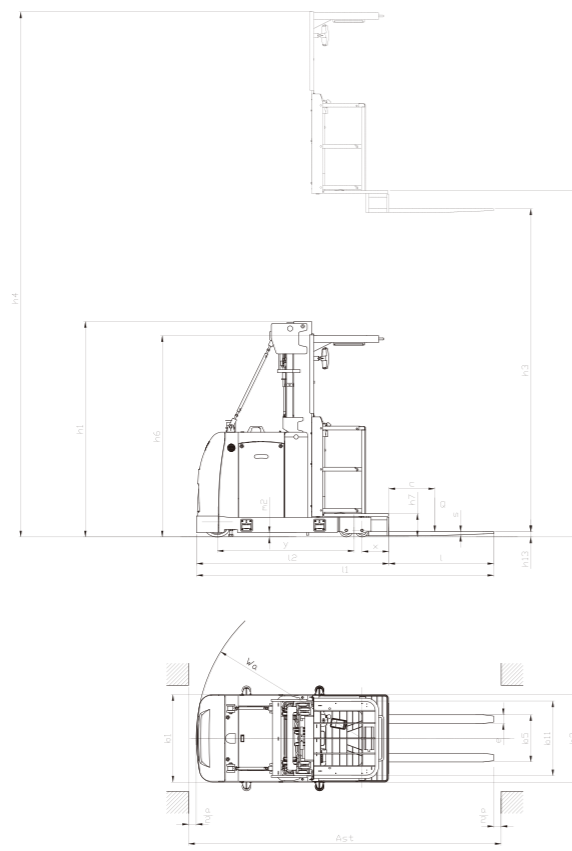
Mast Specification

Model	Lift h ₃ (mm)	Lowered overall height h ₁ (mm)	Extended mast height h ₄ (mm)	Stand height h ₁₂ (mm)	Service weight (Excluding battery)			
					kg			
					CJD12-AC4-H	CJD12-AC4-HK	CJD12-AC4-HI	CJD12-AC4-HKI
N4500	4500	2315	6800	4766	3015	2865	3625	3475
N4750	4750	2385	7050	5016	3036	2886	3646	3496
N5000	5000	2465	7456	5266	3060	2910	3670	3520
N5500	5500	2630	7800	5766	3109	2959	3719	3569
N6000	6000	2800	8300	6266	3180	3030	3790	3640
N6500	6500	2965	8800	6766	3229	3079	3839	3699
N7000	7000	3130	9300	7266	3278	3128	3888	3748
N7500	7500	3345	9800	7766	3374	3224	3984	3844
N8000	8000	3515	10300	8266	3424	3374	4034	3894
N8300	8300	3615	10600	8566	3453	3403	4063	3923
N8500	8500	3730	10800	8766	3487	3437	4097	3957
N9000	9000	3955	11300	9266	3575	3525	4185	4063
N9250	9250	4040	11550	9516	3600	3550	4210	4088
N9500	9500	4125	11800	9766	3625	3575	4235	4113

RATED CAPACITIES AND LOAD CENTRES GRAPH



CJD12-AC1-H



CJD12-AC1-HK



HANGCHA GROUP CO., LTD.

Factory site: 666 Xiangfu Road,
Hangzhou, Zhejiang, China (311305)

Tel: +86-571-88926735 88926755
Fax: +86-571-88926789 88132890

sales@hcforklift.com
www.hcforklift.com



Follow us on Facebook



Follow us on YouTube



Follow us on WeChat



Download "Hangcha Forklift" App



ISO45001



ISO14001



ISO9001



HANGCHA trucks conform to the European Safety Requirements.

HANGCHA GROUP CO., LTD. reserves the right to make any changes without notice concerning colors, equipment, or specifications detailed in this brochure, or to discontinue individual models. The colors of trucks, delivered may differ slightly from those in brochures.

2025 VERSION 2/COPYRIGHT 2025/04



INNOVATIVE LITHIUM-ION

**A Series High-lift
Order Picker**
with capacities of 1,200kg



The World of Hangcha
SINCE 1956

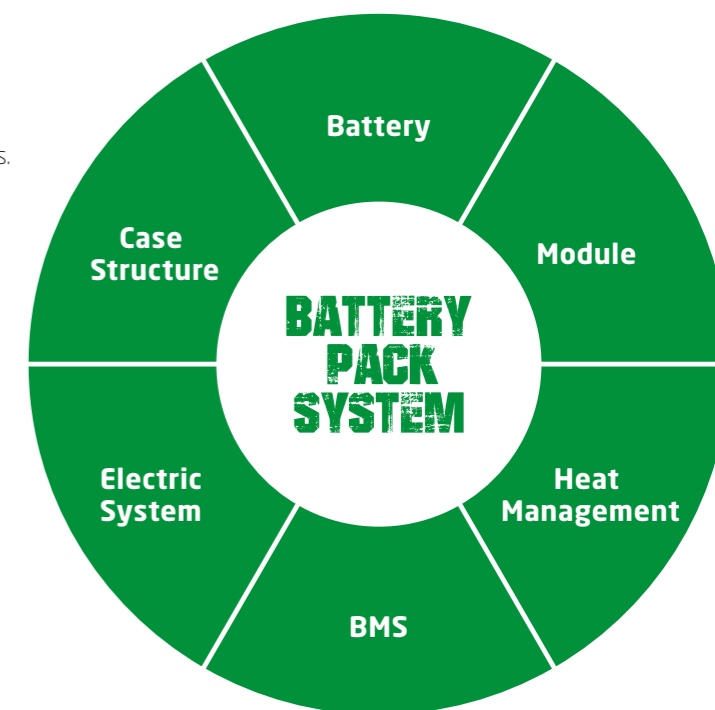


LET THE LIUM POWER BE KE



INNOVATIVE SOLUTIONS NEW POWER NOW

- / We use square lithium iron phosphate batteries and modules used in large quantities by commercial vehicles in mature economies.
- / The module uses an aluminum alloy frame which is sturdy, lightweight and with excellent heat dissipation.
- / Safe and effective: Charging efficiency as high as 98%, thermal runaway temperature 600 °C or above.
- / Adapted to low temperatures: Comes standard with an electrical heating feature, ensuring normal operation in low temperatures.
- / Quick charging: 2 hours full charge, economic use of each break.
- / Long-working: 4000 charging cycles, capacity retention greater than 75%.
- / Maintenance-free: Battery does not require manual maintenance.
- / Green and clean: Pollution-free, zero emissions.



Li-Ion
2 hours
100%

Lead-acid batteries
8-10 hours 100%

Rapid charging and opportunity charging ensure continuous availability of vehicles.

Li-Ion powered forklifts are always available. They allow for fast full charging or boost charging (100 % charge in 2 hours). They are maintenance free and do not require a battery change when used for multi-shift operations.

Li-Ion Battery Pack specification

Type		CJD12-AC4-HI*	CJD12-AC4-HKI*
Li-Ion battery	V/Ah	48/500	48/500

Note: * CE model



HC provides Li-Ion battery (LiFePO4) with 6 years or 12000 hours warranty.

6 YEARS
WARRANTY



A Series High-lift Order Picker

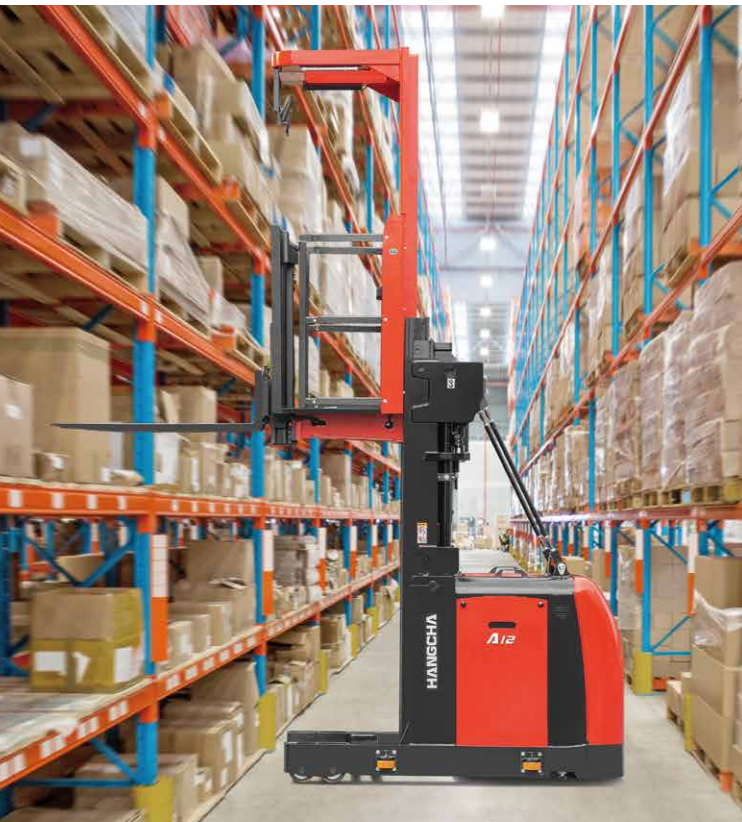
The A Series high-lift order picker, a high-end warehouse equipment, provides a comprehensive safety protection system, excellent ergonomics design and advanced control system. Being reliable and stable, comfortable and safe, and along with excellent performance, it is a perfect option for cargo picking in stereoscopic warehouse that is 5m to 10m high.

HIGH PERFORMANCE TO ORDER

Comfort

- / Standard equipped with height sensors, and buffer function in mast switching, lifting and lowering, it provides more comfort to the operators.
- / The standard LORD steering gear with torque feedback system improves operation safety and comfort.
- / The lifting and lowering speed of the operating platform and fork can be adjusted steplessly, to achieve accurate control.
- / The standard equipped CURTIS multi-function instrument has many functions such as mode selection, wheel position display, etc., and can clearly show various information of the vehicle.





Reliability

- / The mast is made of high-strength steel plate, which is sturdy and reliable.
- / All wires and cables are reliably protected, greatly improving the reliability of the electrical system.
- / Important components adopted such as switches, connectors, instruments, etc. are foreign high-quality products, with excellent performance and reliable quality.

Safety

- / The FREE acceleration lever with an inductive switch is equipped as standard to prevent accidental contacts during operation.
- / Equipped with a tilt switch sensor as standard, operation and control safety is improved.
- / The left and right guard rails are equipped with safety detection switches.
- / With 10 times safety factor, the mast chain is also equipped with a chain safety switch.
- / The driving speed is related to the lifting height. The higher the lifting height, the lower the driving speed and the smaller the acceleration.
- / The function of proportional speed reduction in corners is equipped as standard to ensure smooth and safe turning of the vehicle.
- / With emergency lowering function, it can be operated separately on the operating platform and the rear of the vehicle.

Standard Specification

- / ZF drive unit assembly
- / LORD steering gear
- / CURTIS AC motor controller
- / Free acceleration lever (with inductive switch)
- / Automatic speed reduction in corners
- / CURTIS multi-function instrument
- / Chain switch
- / Guard rail switch
- / Reflective mirror
- / LED top light
- / LED sidelight
- / Emergency power off switch
- / Police light
- / Height sensor
- / Safety pedal
- / Tilt switch
- / Left and right guard rail
- / Folder
- / Back cushion
- / Cup holder
- / Electrostatic belt
- / Electromagnetic brake
- / Supplementary lift (only for CJD12-AC1-H)
- / Full-length safety belt + single-hook shock cord (only for CJD12-AC1-HK)
- / Mounted fork (only for CJD12-AC1-H)
- / Welded fork (only for CJD12-AC1-HK)

Options

- / Side roller
- / Blue light
- / Headlight
- / Masts available in various heights
- / Battery trolley



High Performance

- / The maximum driving speed at full load is up to 10km/h, which greatly improves the work efficiency.
- / The Germany ZF reduction gearbox, Schabmueller AC drive and steering motor, contribute to a better performance and greater stability.
- / AC hydraulic lifting system offers high efficiency and free maintenance.
- / The advanced CURTIS AC control system provides precise, smooth and efficient control.
- / The CANBUS structure engages faster and more reliable communication.

Maintenance

- / The AC motor has no carbon brush and is maintenance-free, which greatly saves the cost of use.
- / The integrated power display, timing and fault self-diagnosis meter is convenient for maintenance.
- / The rear hood can be easily disassembled for easy maintenance of hydraulic unit, electronic control, motor and other parts.



Supplementary lift on operator platform. Pallet can be raised to most convenient working level for picking



Rail guidance rollers (Opt.) can be fitted to the truck for VNA working



Control and display panel integrated are perfectly in the drivers field of view



Standard LCD display informs the driver about all necessary informations



Simultaneous driving/lifting/lowering, simple and ergonomic controls allow precise operation reducing driver fatigue and increasing throughput

A Series High-lift Order Picker Specification

Distinguishing mark	1.1	Manufacturer (abbreviation)	HANGCHA GROUP CO.,LTD.			
			CJD12-AC4-H*	CJD12-AC4-HK*	CJD12-AC4-HI*	CJD12-AC4-HKI*
	1.2	Manufacturer's type designation				
	1.3	Drive: electric	Electric	Electric	Electric	Electric
	1.4	Operator type	Order picker	Order picker	Order picker	Order picker
	1.5	Rated capacity/rated load	Q (kg)	1200	1200	1200
	1.6	Load centre distance	c (mm)	400	400	400
	1.8	Load distance, centre of drive axle to fork	x (mm)	307	307	307
	1.9	Wheelbase	y (mm)	1566	1566	1566
Weight	2.1	Service weight (incl.battery)	kg	3960	3810	3960
		Service weight (without battery)	kg	3060	2910	3670
Tyres, chassis	3.1	Tyres: solid rubber, superelastic, pneumatic, polyurethane		PU	PU	PU
	3.2	Tyre size, front	mm	Φ343×140	Φ343×140	Φ343×140
	3.3	Tyre size, rear	mm	Φ150×100	Φ150×100	Φ150×100
	3.5	Wheels, number front/rear (* = driven wheels)		1x/4	1x/4	1x/4
	3.7	Tread, rear	b1(mm)	856	856	856
Dimensions	4.2	Height, mast lowered	h1(mm)	2456	2456	2456
	4.4	Lift	h3(mm)	5000	5000	5000
	4.5	Height, mast extended	h4(mm)	7456	7456	7456
	4.7	Height of overhead guard (cabin)	h6(mm)	2300	2300	2300
	4.8	Seat height relating to SIP/stand height	h7(mm)	266	266	266
	4.11	Additional lift	h5(mm)	800	/	800
	4.14	Stand height, elevated	h2(mm)	5266	5266	5266
	4.15	Height, lowered	h3(mm)	75	75	75
	4.19	Overall length	l1(mm)	3400	3400	3400
	4.20	Length to face of forks	l2(mm)	2200	2200	2200
	4.21	Overall width	b1/b2(mm)	1000/1000	1000/1000	1000/1000
	4.22	Fork dimensions DIN ISO 2331	s / e / l (mm)	55/122/1200	55/100/1200	55/122/1200
	4.25	Fork spread	b5(mm)	/	540	/
4.32	Ground clearance, centre of wheelbase	m2(mm)	50	50	50	
4.34.1	Aisle width for pallets 1000 × 1200 crossways	Ast(mm)	3535	3535	3535	
4.35	Turning radius	Wa(mm)	1812	1812	1812	
Performance Data	5.1	Travel speed, laden/unladen	km/h	10/10	10/10	10/10
	5.2	Lift speed, laden/unladen	mm/s	371/411	371/411	371/411
	5.3	Lowering speed, lade/unladen	mm/s	486/448	486/448	486/448
	5.8	Max. gradeability, laden/unladen	%	10/10	10/10	10/10
	5.10	Service brake		Regenerative	Regenerative	Regenerative
Electric engine	6.1	Drive motor rating S2 60 min	kW	6.4	6.4	6.4
	6.2	Lift motor rating at S3 15 %	kW	12.8	12.8	12.8
	6.4	Battery voltage/nominal capacity K5	V/Ah	48/620	48/620	/
		Battery voltage/nominal capacity	V/Ah	/	/	48/500
	Battery weight	kg	900	900	290	

Note : ★ CE model